

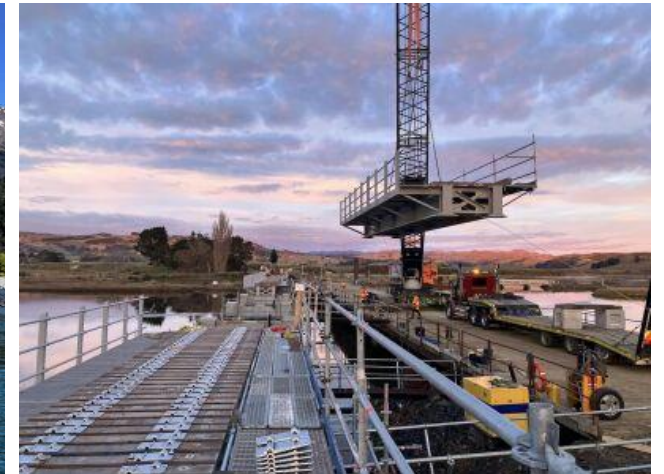
# Waikato Regional Transport Committee June 2026

Lisa De Coek, GM Government Engagement, Policy and Funding



# Agenda

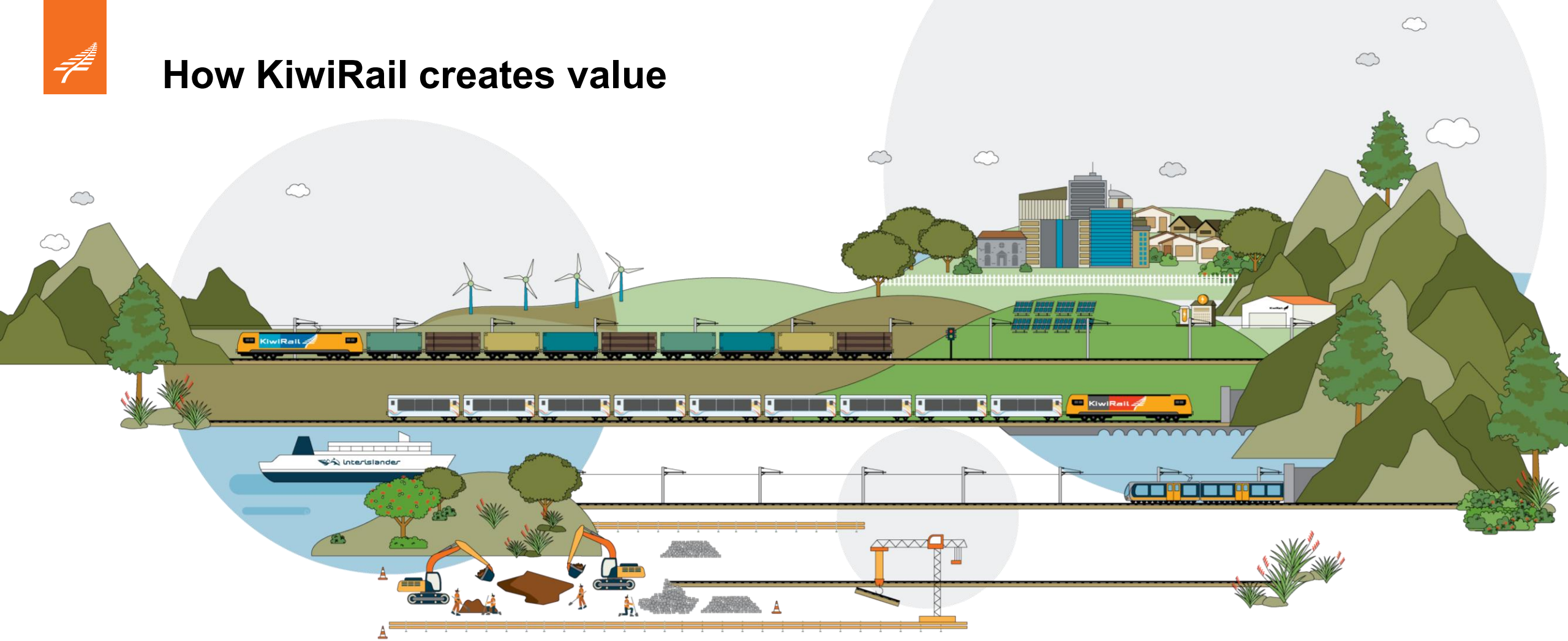
- **KiwiRail Overview**
- **The Rail Network Investment Programme (RNIP)**
- **Level Crossings**
- **Infrastructure Update**
- **Freight Update**



# KiwiRail Overview



# How KiwiRail creates value



**4600**  
employees

Moves **15 million tonnes**  
of freight (13% market share)  
**23%** of New Zealand's exports

Enables  
**24 million+**  
metro commuter  
trips / year

Operates  
and  
maintains  
**3800km**  
of track

**18,000+**  
hectares of land

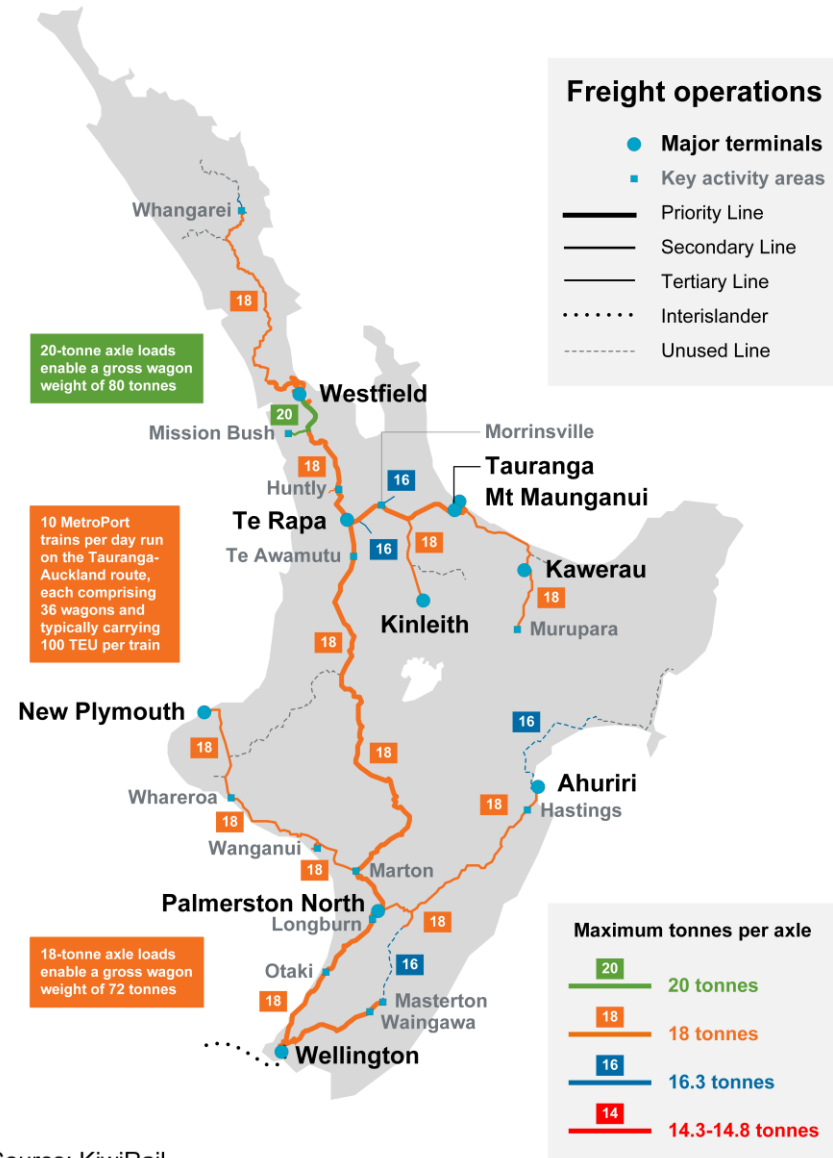
Tourism rail  
experiences  
and regional  
commuter rail

Interislander ferry service  
**73,000** commercial vehicles moved  
/ year  
**600,000** passenger trips / year



## KiwiRail Network – North Island

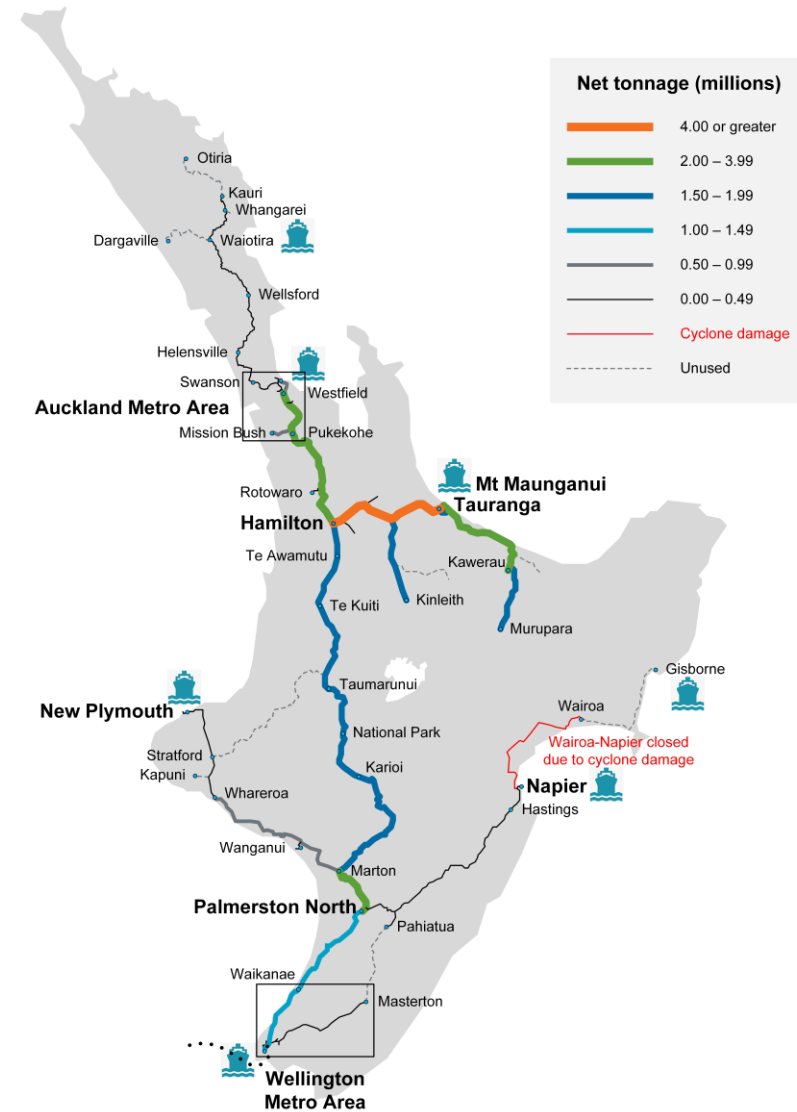
Maximum axle loads and major yards



Source: KiwiRail

## KiwiRail Network – North Island

Net freight tonnage density FY25



# The Rail Network Investment Programme (RNIP)



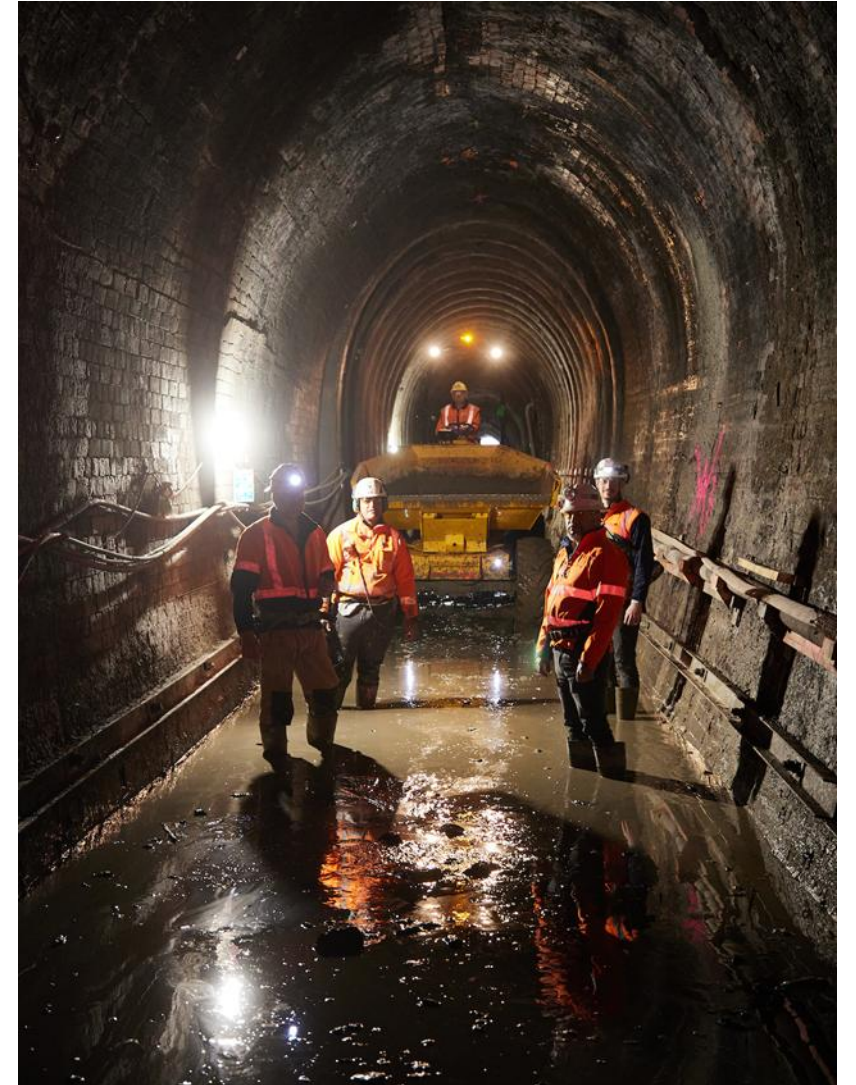
# Rail Network Investment Programme

The RNIP is guided by the GPS. The investment focus for rail is:

- Investing in the busiest and most productive parts of the existing rail network, to support efficient movement of freight
- Investing in the metropolitan rail networks to support the efficient movement of people in Auckland and Wellington

## Key Benefits of the RNIP:

- Increasing rail's contribution to economic growth and productivity
- Increased reliability on passenger routes
- Increased reliability on priority routes
- Improved safety
- Greater value for money
- Emissions reduction



*Tunnel works underway*



# 2027-30 Rail Network Investment Programme

## \$1.075bn in Budget 2026 for RNIP 3.0

KiwiRail started work on developing the next RNIP (3-year programme, 10-year forecast). There is a continued focus on putting forward a more efficient proposal that maximises customer outcomes and provides value for money. We expect metro passenger rail and the Golden Triangle to remain a priority through the next GPS. We await the release of the draft GPS 2027 – 37 for consultation

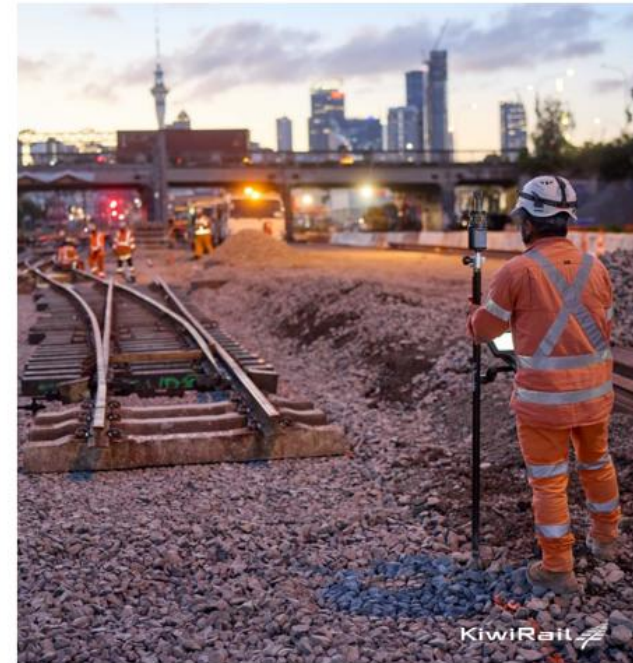
## Key milestones for RNIP 3.0

- Indicative programmes outlined (including for RLTP input) – mid to late 2026
- Final RNIP completion – early to mid 2027
- Expected Minister of Transport Approval – mid 2027
- We will be engaging with RTCs during the development of the RNIP 3.0 on priorities and aspects such as the proposed level crossing work programme.

RNIP3 Development Programme Management Plan



**RAIL NETWORK**  
INVESTMENT PROGRAMME





# Level Crossings



## RNIP and RLTP Development

- KiwiRail is preparing a nationally prioritised programme for future works, including level crossings, as part of the development of our RNIP 2027-30.
- This will set out what work is needed, location and priority, based on safety and risk.
- The programme will be shared by early August to help inform councils' continuous programmes as part of their RLTP development process.
- We will include a limited number of more significant Safety Improvements projects too but only have limited capacity and funding to deliver these annually

## Level Crossing update

- KiwiRail is proposing a consistent nationwide approach to funding level crossing maintenance and renewals which is based on a 50:50 split with councils.
- As part of the RNIP planning process we will identify national maintenance and renewal priorities geographically which will be shared and agreed with RTCs enabling RLTP planning to be progressed.
- We will engage with councils through REG prior to any implementation.

# Freight Update



# National Freight Demand Study

- Work on the National Freight Demand Study has commenced
- NZTA has engage Deloittes to look at establishing a more automated methodology using a range of administrative data already collected by the public or private sector.
- KiwiRail fully supports this work.
- We are contributing data to this and participating in various stakeholder workshops.
- Phase 1 the new methodology report is due to be delivered in August.
- Phase 2 is to undertake the first National Freight Demand Study utilising the new methodology will follow later in the year.

